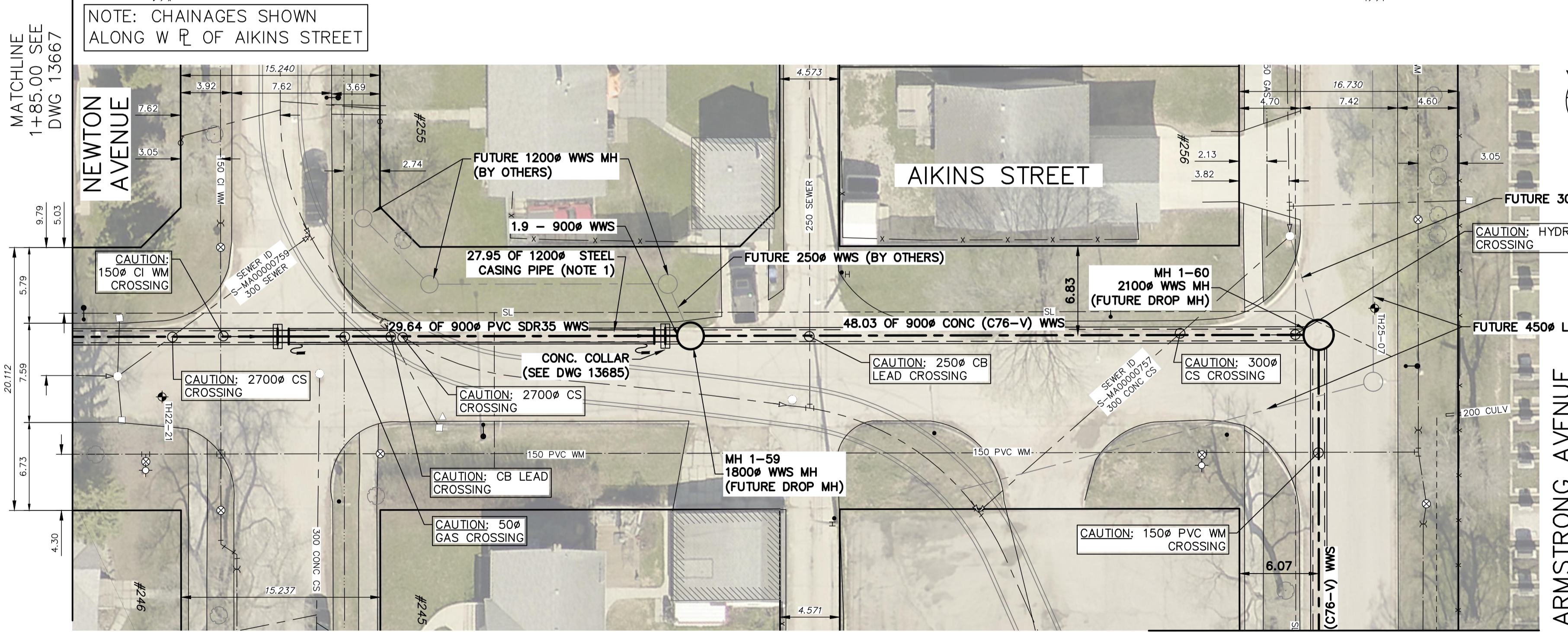


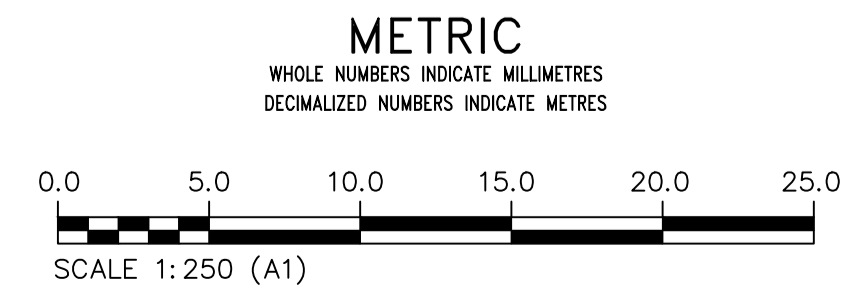
- NOTES:**
- CASING PIPE SPECIFICATION:**
    - OUTSIDE DIAMETER: 1219mm
    - WALL THICKNESS: 19.1mm
    - PIPE MATERIAL: STEEL
    - ASTM A252 GR2
    - PROTECTION: N/A
    - JOINT: WELDED
    - INSTALLTION: AUGER BORING
    - CARRIER PIPE TO BE SUPPORTED BY MANUFACTURED CASING SPACES. CASING ENDS TO BE SEALED WITH MANUFACTURED NEOPRENE RUBBER END SEALS.

SEWER SERVICE INFORMATION					
ADDRESS	STATUS	SIZE (mm)	COORDINATES AT JUNCTION	COORDINATES AT PROPERTY	REMARKS



FOR CONTINUATION  
SEE DWG 13669

FOR INDEX PAGE  
SEE DWG 13643



**WARNING**

IF POWER EQUIPMENT OR EXPLOSIVES ARE TO BE USED FOR EXCAVATION ON THIS PROJECT THE CONTRACTOR MUST:

- 1) NOTIFY THE GAS COMPANY OF THE PROPOSED LOCATION OF EXCAVATION.
- 2) TAKE PRECAUTION TO AVOID DAMAGE TO GAS COMPANY INSTALLATIONS.

SEE PROVINCIAL REGULATION 210/72 FOR DETAILS

**LOCATION APPROVED**  
UNDERGROUND STRUCTURES

SUPV. U/G STRUCTURES COMMITTEE DATE

NOTE:

LOCATION OF UNDERGROUND STRUCTURES AS SHOWN ARE BASED ON THE BEST INFORMATION AVAILABLE BUT NO GUARANTEE IS GIVEN THAT ALL EXISTING UTILITIES ARE SHOWN OR THAT THE GIVEN LOCATIONS ARE EXACT. CONFIRMATION OF EXISTENCE AND EXACT LOCATION OF ALL SERVICES MUST BE OBTAINED FROM THE INDIVIDUAL UTILITIES BEFORE PROCEEDING WITH CONSTRUCTION.

VERTICAL DATUM: CGVD28 (HT2.0 Geoid)

HORIZONTAL DATUM: NAD83 (June 1990), Zone 14

NO.	ISSUED FOR CONSTRUCTION	DATE (YYYY/MM/DD)	MID	BY
0	ISSUED FOR CONSTRUCTION	2026/03/10	MID	

**KGS GROUP**

DESIGNED BY	MID	CHECKED BY	TLE
DRAWN BY	GEL	APPROVED BY	RBO
SCALE:		RELEASED FOR CONSTRUCTION	
HORIZONTAL: 1:250		DUANE BAKER	
VERTICAL: 1:50		DATE	2026/03/12
		DATE	

PLOT DATE:

ENGINEER'S SEAL

ORIGINAL DRAWING SEALED BY:  
M.A. IANKOVA-DEDOVA  
2026/03/11

CONSULTANT DRAWING NUMBER  
C1-27

**THE CITY OF WINNIPEG**  
WATER AND WASTE DEPARTMENT  
ENGINEERING SERVICES DIVISION

**ARMSTRONG SEWER RELIEF WORKS**  
CONTRACT 1  
**AIKINS STREET**  
8.3 S OF NEWTON AVENUE  
TO ARMSTRONG AVENUE

SHEET 27 OF 46  
CITY DRAWING NUMBER  
13668